

Data sheet | Item number: 2002-641

End plate; for modular TOPJOB®S test plug module; gray

www.wago.com/2002-641



Data

Geometrical Data

Width	1.5 mm / 0.059 inch
-------	---------------------

Material Data

Color	gray
Fire load	0.01 MJ
Weight	0.3 g

Subject to changes. Please also observe the further product documentation!

WAGO Kontakttechnik GmbH & Co. KG
Hansastr. 27
32423 Minden
Phone: +49571 887-0 | Fax: +49571 887-169
Email: info.de@wago.com | Web: www.wago.com


Do you have any questions about our products?
We are always happy to take your call at +49 (571) 887-44222.

Commercial data

Product Group	22 (TOPJOB S)
Packaging type	BOX
Country of origin	DE
GTIN	4045454997427
Customs Tariff No.	85389099990

Approvals / Certificates

Ship Approvals

Logo	Approval	Additional Approval Text	Certificate name
	BV Bureau Veritas S.A.	EN 60947	38586/A0 BV

Counterpart

Compatible products

Protective Warning Marker



Item no.: 2002-115

Protective warning marker; with high-voltage symbol, black; for 5 terminal blocks; yellow

www.wago.com/2002-115

Downloads

Documentation

Bid Text

2002-641 doc - Datei	Apr 27, 2017	doc 24.1 kB	Download
2002-641 GAEB X81 - Datei	Feb 19, 2019	xml 2.6 kB	Download
Additional Information Technical explanations	Apr 3, 2019	pdf 2.1 MB	Download

Subject to changes. Please also observe the further product documentation!

CAD/CAE-Data

CAE data

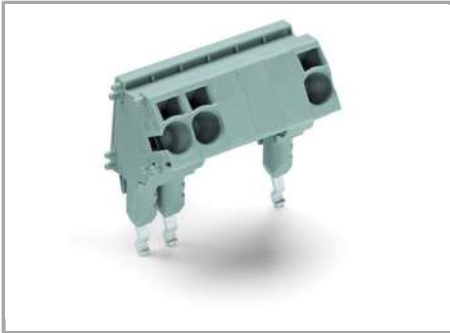
WSCAD Universe 2002-641

URL

Download

Installation Notes

Installation



TOPJOB® S L-type test plug assembly:

- L-type test plug modules
-
- L-type spacer modules (max. 10-pole) to skip terminal blocks
-

Product family

TOPJOB® S

TOPJOB® S: In various industrial applications and modern building installations, WAGO's wide and versatile range of rail-mount terminal blocks provides more than just reliable electrical connections.

[Show all products from the family](#)

Subject to changes. Please also observe the further product documentation!