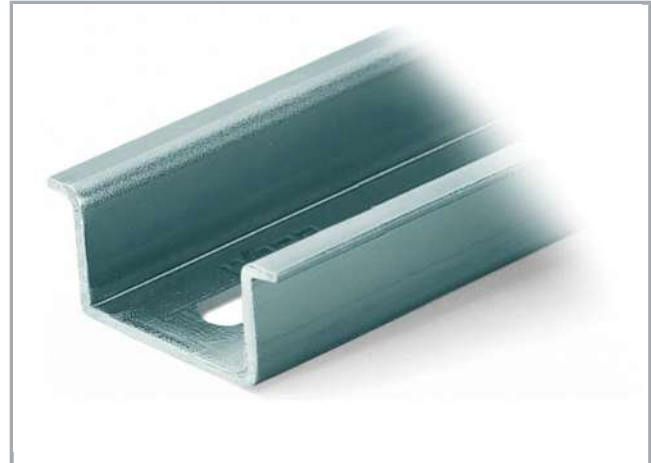


Data sheet | Item number: 210-197

Steel carrier rail; 35 x 15 mm; 1.5 mm thick; 2 m long; slotted; similar to EN 60715

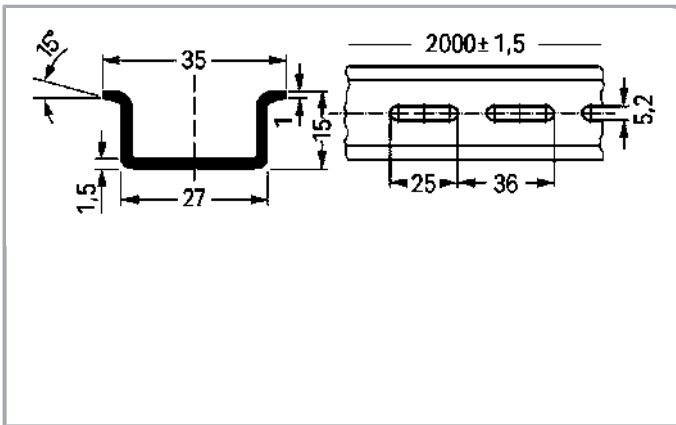


www.wago.com/210-197



RoHS Compliant

[BOMcheck.net](https://www.bomcheck.net)



Data

Technical Data

Main product function

Mounting Accessories

Subject to changes. Please also observe the further product documentation!

WAGO Kontakttechnik GmbH & Co. KG
Hansastr. 27
32423 Minden
Phone: +49571 887-0 | Fax: +49571 887-169
Email: info.de@wago.com | Web: www.wago.com

Do you have any questions about our products?
We are always happy to take your call at +49 (571) 887-44222.

Geometrical Data

| | |
|--------|----------------------|
| Width | 2000 mm / 78.74 inch |
| Height | 15 mm / 0.591 inch |
| Depth | 35 mm / 1.378 inch |

Material Data

| | |
|--------|--------|
| Weight | 1235 g |
|--------|--------|

Commercial data

| | |
|--------------------|--------------------------------|
| Product Group | 2 (Terminal Block Accessories) |
| Packaging type | BOX |
| Country of origin | IT |
| GTIN | 4017332102759 |
| Customs Tariff No. | 72169180000 |

Counterpart

Compatible products

Marking accessories



Item no.: 210-708
Labels; for TP printers; 9.5 x 25 mm; white

www.wago.com/210-708



Item no.: 210-808
Labels; for Smart Printer; 9.5 x 25 mm; white

www.wago.com/210-808

assembling



Item no.: 209-137
Mounting adapter; can be used as end plate; 6.5 mm wide; gray

www.wago.com/209-137



Item no.: 210-148
Angled support bracket; without screw

www.wago.com/210-148



Item no.: 210-149
Screw M 5 x 8; for angled support bracket

www.wago.com/210-149



Item no.: 249-116
Screwless end stop; 6 mm wide; for DIN-rail 35 x 15 and 35 x 7.5; gray

www.wago.com/249-116

Subject to changes. Please also observe the further product documentation!



Item no.: 249-117

Screwless end stop; 10 mm wide; for DIN-rail 35 x 15 and 35 x 7.5; gray

www.wago.com/249-117



Item no.: 249-197

Screwless end stop; 14 mm wide; for DIN-rail 35 x 15 and 35 x 7.5; gray

www.wago.com/249-197

Downloads

Documentation

Bid Text

| | | | |
|-----------------------------|--------------|----------------|----------|
| 210-197 GAEB X81 - Datei | Feb 19, 2019 | xml 2.8 kB | Download |
| 210-197 doc - Datei | Aug 31, 2017 | doc 24.1 kB | Download |

CAD/CAE-Data

CAD data

| | | |
|----------------------|-----|----------|
| 2D/3D Models 210-197 | URL | Download |
|----------------------|-----|----------|

CAE data

| | | |
|------------------------|-----|----------|
| WSCAD Universe 210-197 | URL | Download |
|------------------------|-----|----------|

Installation Notes

Subject to changes. Please also observe the further product documentation!