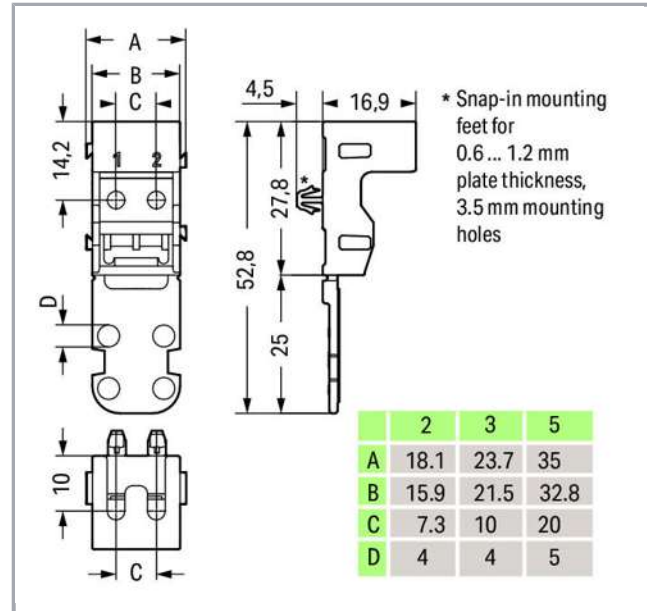


## Data sheet | Item number: 221-513/000-004

Mounting carrier; for 3-conductor terminal blocks; 221 Series - 4 mm<sup>2</sup>; with snap-in mounting foot for horizontal mounting; black



[www.wago.com/221-513\\_000-004](http://www.wago.com/221-513_000-004)



RoHS Compliant

[BOMcheck.net](https://www.bomcheck.net)

Color:

### Data

#### Geometrical Data

Width	23.7 mm / 0.933 inch
Height	21.4 mm / 0.843 inch
Height from the surface	16.9 mm / 0.665 inch
Depth	52.8 mm / 2.079 inch

#### Material Data

Color	black
Insulating material	Polyamide 66 (PA 66)
Flammability class per UL94	V0
Weight	3.6 g

Subject to changes. Please also observe the further product documentation!

WAGO Kontakttechnik GmbH & Co. KG  
Hansastr. 27  
32423 Minden  
Phone: +49571 887-0 | Fax: +49571 887-169  
Email: [info.de@wago.com](mailto:info.de@wago.com) | Web: [www.wago.com](http://www.wago.com)

Do you have any questions about our products?  
We are always happy to take your call at +49 (571) 887-44222.



## Commercial data

Packaging type	BOX
Country of origin	CN
GTIN	4055143640916
Customs Tariff No.	39269097900

## Counterpart

### Downloads

#### Documentation

##### Bid Text

221-513/000-004 GAEB X81 - Datei	Feb 19, 2019	xml 2.8 kB	Download
-------------------------------------	--------------	---------------	----------

##### Additional Information

Technical explanations	Apr 3, 2019	pdf 2.1 MB	Download
------------------------	-------------	---------------	----------

## CAD/CAE-Data

### CAD data

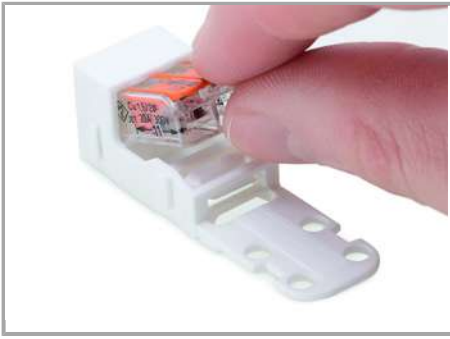
2D/3D Models 221-513/000-004	URL	Download
------------------------------	-----	----------

## Installation Notes

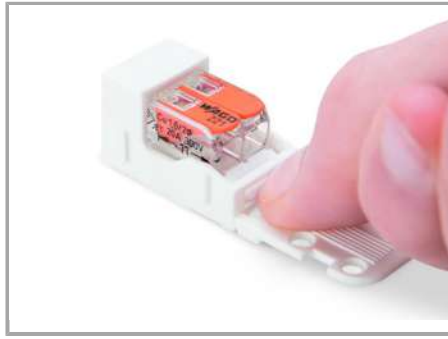
Subject to changes. Please also observe the further product documentation!

WAGO Kontakttechnik GmbH & Co. KG  
Hansastr. 27  
32423 Minden  
Phone: +49571 887-0 | Fax: +49571 887-169  
Email: [info.de@wago.com](mailto:info.de@wago.com) | Web: [www.wago.com](http://www.wago.com)

Do you have any questions about our products?  
We are always happy to take your call at +49 (571) 887-44222.

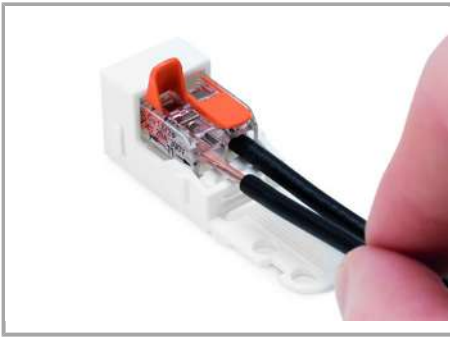


Inserting a connector into the mounting carrier.

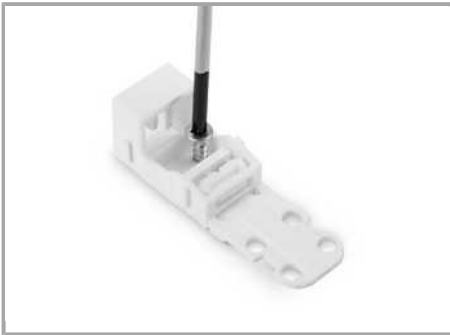


Removing a connector from the mounting carrier.

### Inserting a conductor



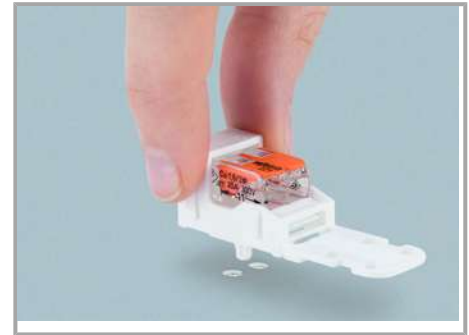
Inserting a conductor.



Horizontal screw mounting

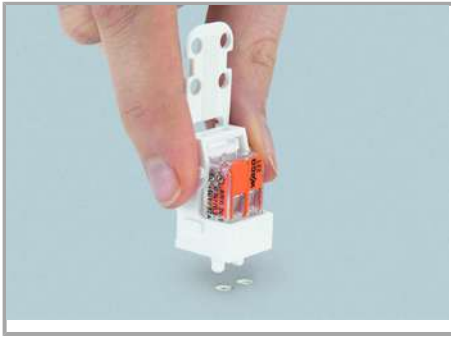


Vertical screw mounting



Horizontal mounting via snap-in foot

Subject to changes. Please also observe the further product documentation!



Vertical mounting via snap-in foot

### Strain Relief

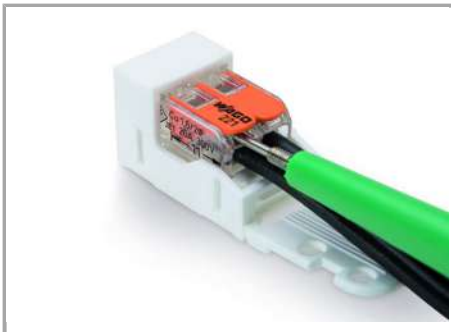


Use a cable tie to secure the conductors to the strain relief plate.



The strain relief plate can be removed.

### Testing



Testing a connector mounted on the carrier via test slot.

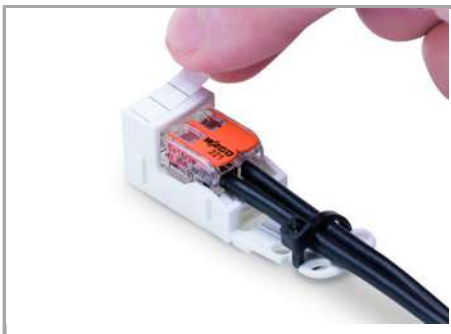
### Application

Subject to changes. Please also observe the further product documentation!



Connecting a light to the mains.

#### Marking



Labeling

Subject to changes. Please also observe the further product documentation!