

Data sheet | Item number: 281-482

Comb-style jumper bar; insulated; 2-way; IN = IN terminal block; gray

www.wago.com/281-482



Subject to changes. Please also observe the further product documentation!

WAGO Kontakttechnik GmbH & Co. KG
Hansastr. 27
32423 Minden
Phone: +49571 887-0 | Fax: +49571 887-169
Email: info.de@wago.com | Web: www.wago.com

Do you have any questions about our products?
We are always happy to take your call at +49 (571) 887-44222.

RoHS 
Compliant

BOMcheck.net

Color: **Data****Geometrical Data**

Width	12 mm / 0.472 inch
Depth	5 mm / 0.197 inch

Material Data

Color	gray
Fire load	0.008 MJ
Weight	1.5 g

Commercial data

Packaging type	BOX
Country of origin	DE
GTIN	4044918523042
Customs Tariff No.	85366990990

Counterpart**Compatible products****tools**

Item no.: 280-432

Operating tool; made of insulating material; 2-way

www.wago.com/280-432**Downloads****Documentation****Bid Text**

281-482	Feb 19, 2019	xml	Download
X81 - Datei		2.6 kB	

281-482

Subject to changes. Please also observe the further product documentation!

WAGO Kontakttechnik GmbH & Co. KG

Hansastr. 27

32423 Minden

Phone: +49571 887-0 | Fax: +49571 887-169

Email: info.de@wago.com | Web: www.wago.com

Do you have any questions about our products?

We are always happy to take your call at +49 (571) 887-44222.

281-482

doc - Datei

Apr 28, 2017

doc
24.1 kB

Download

Additional Information

Technical explanations

Apr 3, 2019

pdf
2.1 MB

Download

CAD/CAE-Data**CAD data**

2D/3D Models 281-482

URL

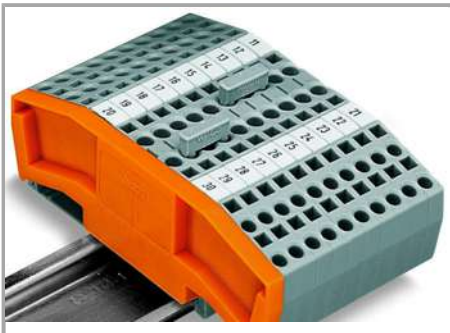
Download

CAE data

WSCAD Universe 281-482

URL

Download

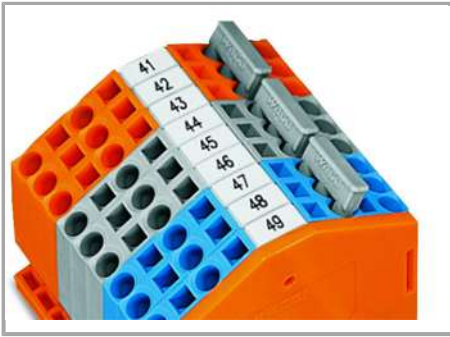
Installation Notes**Jumpered**

Commoning with comb-style jumper bar.

Push comb-style jumper bar down until fully inserted.

Jumpered

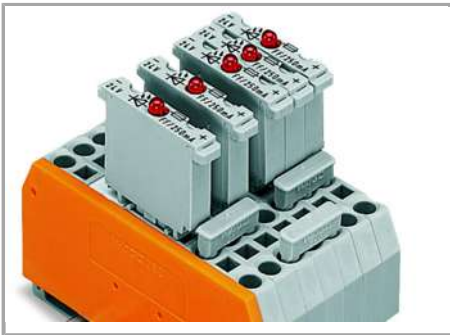
Subject to changes. Please also observe the further product documentation!



4-conductor through terminal blocks, angled type –

formation of groups with 3-way, comb-style jumper bars

Jumpered



Carrier terminal blocks with component plugs,

alternate comb-style jumper bars,

3-way, comb-style jumper bar

Jumpered

Subject to changes. Please also observe the further product documentation!



Commoning front-entry disconnect terminal blocks via comb-style jumper bar using a 10-pole operating tool.

Subject to changes. Please also observe the further product documentation!

WAGO Kontakttechnik GmbH & Co. KG
Hansastr. 27
32423 Minden
Phone: +49571 887-0 | Fax: +49571 887-169
Email: info.de@wago.com | Web: www.wago.com

Do you have any questions about our products?
We are always happy to take your call at +49 (571) 887-44222.