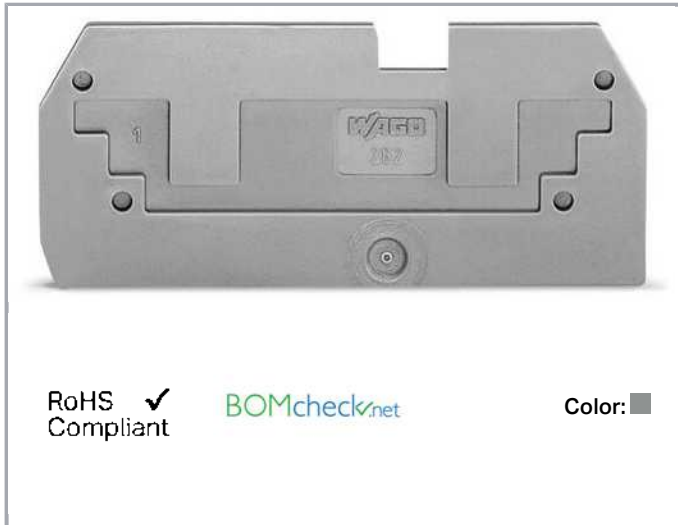


Data sheet | Item number: 282-357

Step-down cover plate; 1 mm thick; in connection with 2-conductor 282-901 terminal blocks; gray

www.wago.com/282-357



Data

Geometrical Data

Width	1 mm / 0.039 inch
Height	23.3 mm / 0.917 inch
Depth	74.1 mm / 2.917 inch

Material Data

Color	gray
Fire load	0.054 MJ
Weight	1.8 g

Commercial data

Product Group	1 (Rail Mounted Terminal Blocks)
Packaging type	BOX
Country of origin	DE
GTIN	4017332337236
Customs Tariff No.	85389099990

Counterpart

Subject to changes. Please also observe the further product documentation!

WAGO Kontakttechnik GmbH & Co. KG
Hansastr. 27
32423 Minden
Phone: +49571 887-0 | Fax: +49571 887-169
Email: info.de@wago.com | Web: www.wago.com

Do you have any questions about our products?
We are always happy to take your call at +49 (571) 887-44222.



Downloads

Documentation

Bid Text

282-357 doc - Datei	May 2, 2017	doc 24.1 kB	Download
------------------------	-------------	----------------	----------

282-357 GAEB X81 - Datei	Feb 19, 2019	xml 2.6 kB	Download
-----------------------------	--------------	---------------	----------

Additional Information

Technical explanations	Apr 3, 2019	pdf 2.1 MB	Download
------------------------	-------------	---------------	----------

CAD/CAE-Data

CAD data

2D/3D Models 282-357	URL	Download
----------------------	-----	----------

CAE data

EPLAN Data Portal 282-357	URL	Download
---------------------------	-----	----------

WSCAD Universe 282-357	URL	Download
------------------------	-----	----------

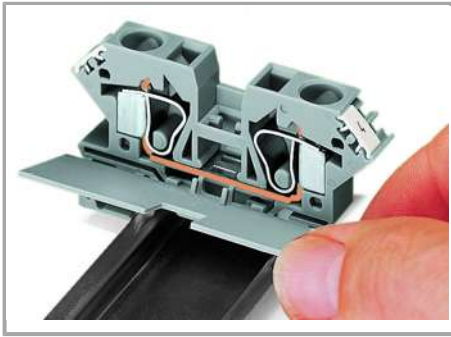
Installation Notes

Assembly

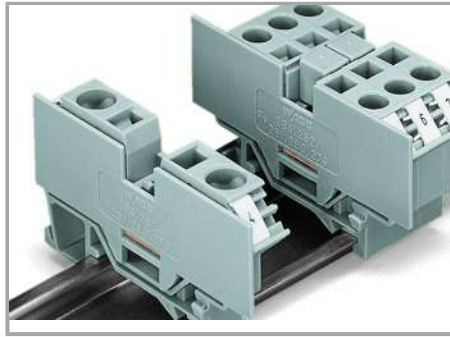
Subject to changes. Please also observe the further product documentation!

WAGO Kontakttechnik GmbH & Co. KG
Hansastr. 27
32423 Minden
Phone: +49571 887-0 | Fax: +49571 887-169
Email: info.de@wago.com | Web: www.wago.com

Do you have any questions about our products?
We are always happy to take your call at +49 (571) 887-44222.



Snapping cover plate onto open side of terminal block.



A cover plate must also be snapped onto the other side of the larger terminal block.

Subject to changes. Please also observe the further product documentation!