

**Data sheet | Item number: 2016-499**

Step-down jumper; insulated; from 16/10 mm<sup>2</sup> to 10/6/4/2.5 mm<sup>2</sup>; Nominal current 57 A; light gray

[www.wago.com/2016-499](http://www.wago.com/2016-499)



Subject to changes. Please also observe the further product documentation!

WAGO Kontakttechnik GmbH & Co. KG  
Hansastr. 27  
32423 Minden  
Phone: +49571 887-0 | Fax: +49571 887-169  
Email: [info.de@wago.com](mailto:info.de@wago.com) | Web: [www.wago.com](http://www.wago.com)

Do you have any questions about our products?  
We are always happy to take your call at +49 (571) 887-44222.

**Data****Electrical data****Ratings per IEC/EN 60664-1**

Rated current	57 A
---------------	------

**Material Data**

Color	light gray
Fire load	0.016 MJ
Weight	3.3 g

**Commercial data**

Product Group	22 (TOPJOB S)
Packaging type	bag
Country of origin	DE
GTIN	4044918317603
Customs Tariff No.	85366990990

**Counterpart****Downloads****Documentation****Bid Text**

2016-499	Apr 28, 2017	doc	Download
doc - Datei		24.1 kB	

2016-499	Feb 19, 2019	xml	Download
GAEB X81 - Datei		2.6 kB	

**Additional Information**

Technical explanations	Apr 3, 2019	pdf	Download
		2.1 MB	

**CAD/CAE-Data****CAD data**

Subject to changes. Please also observe the further product documentation!

WAGO Kontakttechnik GmbH & Co. KG  
 Hansastr. 27  
 32423 Minden  
 Phone: +49571 887-0 | Fax: +49571 887-169  
 Email: [info.de@wago.com](mailto:info.de@wago.com) | Web: [www.wago.com](http://www.wago.com)

Do you have any questions about our products?  
 We are always happy to take your call at +49 (571) 887-44222.

2D/3D Models 2016-499

[URL](#)

[Download](#)

#### CAE data

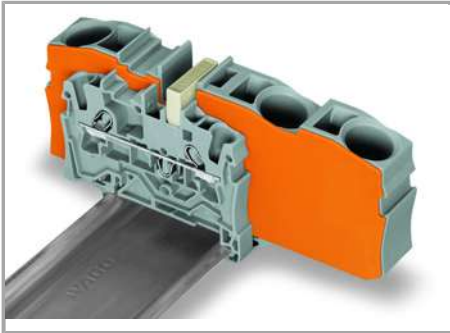
WSCAD Universe 2016-499

[URL](#)

[Download](#)

## Installation Notes

### Jumpered

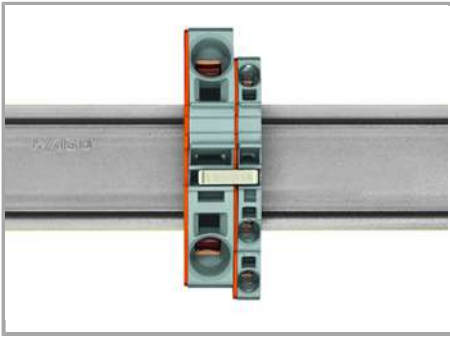


Step-down jumpers may common terminal blocks of different sizes, without losing a conductor clamping point. This can be beneficial on long conductor runs where voltage drops may be problematic. A large conductor can be easily connected to smaller conductors at the distribution point.

Commoning may be made in either direction using the special thin end plate to cover the open side. Additional through terminal blocks having a smaller cross-section may be commoned using push-in type jumper bars.

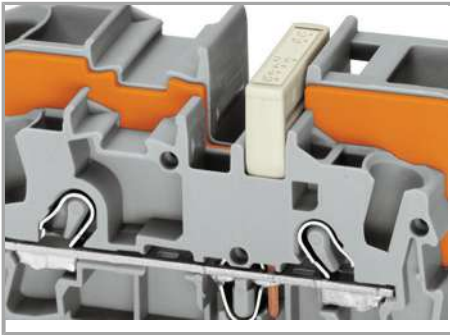
### Jumpered

Subject to changes. Please also observe the further product documentation!



Using step-down jumpers, an end plate must be inserted between the terminal blocks to be commoned.

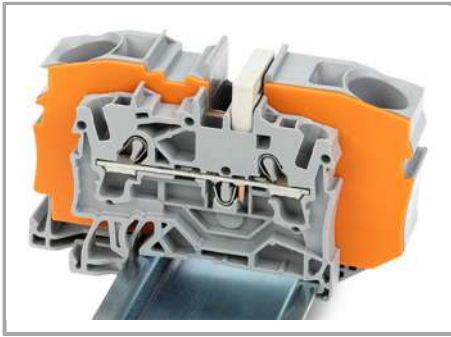
#### Jumpered



Commoning with a step-down jumper.

#### Jumpered

Subject to changes. Please also observe the further product documentation!



**Step-down jumper (2016-499)** commons 16 /10 mm<sup>2</sup> (16/8 AWG) terminal blocks (2016 /2010 Series) with 10/6/4/2.5 mm<sup>2</sup> (8/10/12 /14 AWG) terminal blocks (2010/2006/2004 /2002 Series).

## Product family

### TOPJOB® S

TOPJOB® S: In various industrial applications and modern building installations, WAGO's wide and versatile range of rail-mount terminal blocks provides more than just reliable electrical connections.

[Show all products from the family](#)

Subject to changes. Please also observe the further product documentation!

WAGO Kontakttechnik GmbH & Co. KG  
Hansastr. 27  
32423 Minden  
Phone: +49571 887-0 | Fax: +49571 887-169  
Email: [info.de@wago.com](mailto:info.de@wago.com) | Web: [www.wago.com](http://www.wago.com)

Do you have any questions about our products?  
We are always happy to take your call at +49 (571) 887-44222.