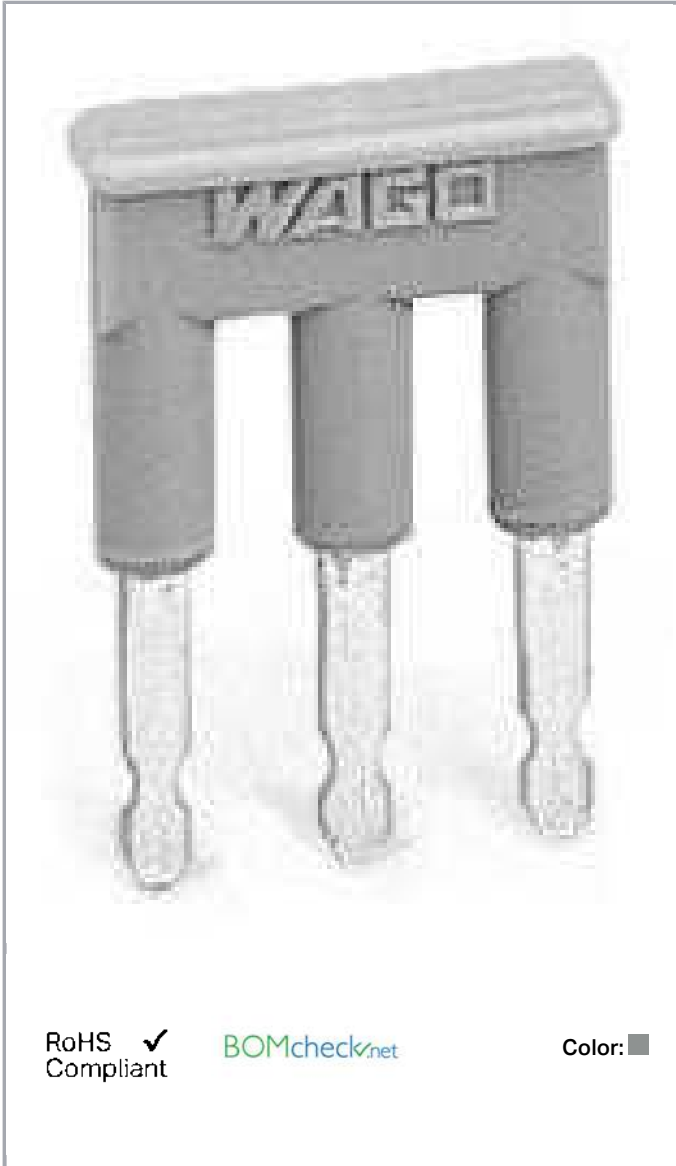


## Data sheet | Item number: 280-484

Comb-style jumper bar; insulated; 4-way; IN = IN terminal block; gray

[www.wago.com/280-484](http://www.wago.com/280-484)



### Data

#### Geometrical Data

Width	20 mm / 0.787 inch
Depth	4 mm / 0.157 inch

Subject to changes. Please also observe the further product documentation!

WAGO Kontakttechnik GmbH & Co. KG  
Hansastr. 27  
32423 Minden  
Phone: +49571 887-0 | Fax: +49571 887-169  
Email: [info.de@wago.com](mailto:info.de@wago.com) | Web: [www.wago.com](http://www.wago.com)

Do you have any questions about our products?  
We are always happy to take your call at +49 (571) 887-44222.



## Material Data

Color	gray
Fire load	0.012 MJ
Weight	1.9 g

## Commercial data

Packaging type	BOX
Country of origin	DE
GTIN	4044918977104
Customs Tariff No.	85366990990

## Counterpart

## Compatible products

### tools



Item no.: 280-434

Operating tool; made of insulating material; 4-way

[www.wago.com/280-434](http://www.wago.com/280-434)

## Downloads

### Documentation

#### Bid Text

280-484 GAEB X81 - Datei	Feb 19, 2019	xml 2.6 kB	Download
280-484 doc - Datei	Apr 27, 2017	doc 24.6 kB	Download

#### Additional Information

Technical explanations	Apr 3, 2019	pdf 2.1 MB	Download
------------------------	-------------	---------------	----------

## CAD/CAE-Data

### CAD data

2D/3D Models 280-484	URL	Download
----------------------	-----	----------

Subject to changes. Please also observe the further product documentation!

WAGO Kontakttechnik GmbH & Co. KG  
 Hansastr. 27  
 32423 Minden  
 Phone: +49571 887-0 | Fax: +49571 887-169  
 Email: [info.de@wago.com](mailto:info.de@wago.com) | Web: [www.wago.com](http://www.wago.com)

Do you have any questions about our products?  
 We are always happy to take your call at +49 (571) 887-44222.

## CAE data

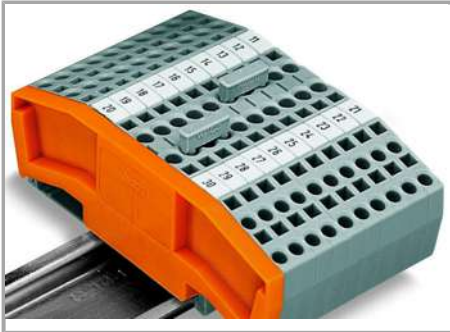
WSCAD Universe 280-484

URL

Download

## Installation Notes

### Jumpered



Commoning with comb-style jumper bar.

Push comb-style jumper bar down until fully inserted.

### Jumpered

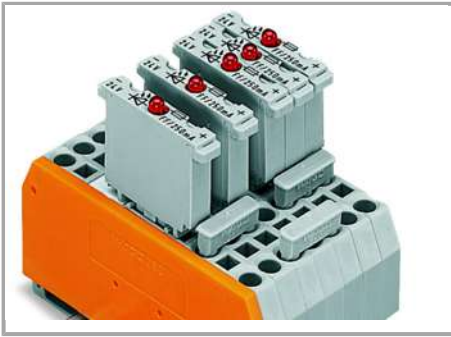


4-conductor through terminal blocks, angled type –

formation of groups with 3-way, comb-style jumper bars

### Jumpered

Subject to changes. Please also observe the further product documentation!

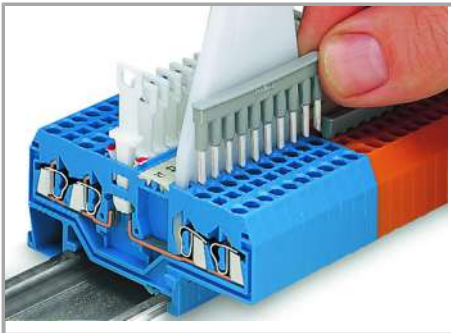


Carrier terminal blocks with component plugs,

alternate comb-style jumper bars,

3-way, comb-style jumper bar

#### Jumpered



Commoning front-entry disconnect terminal blocks via comb-style jumper bar using a 10-pole operating tool.

Subject to changes. Please also observe the further product documentation!