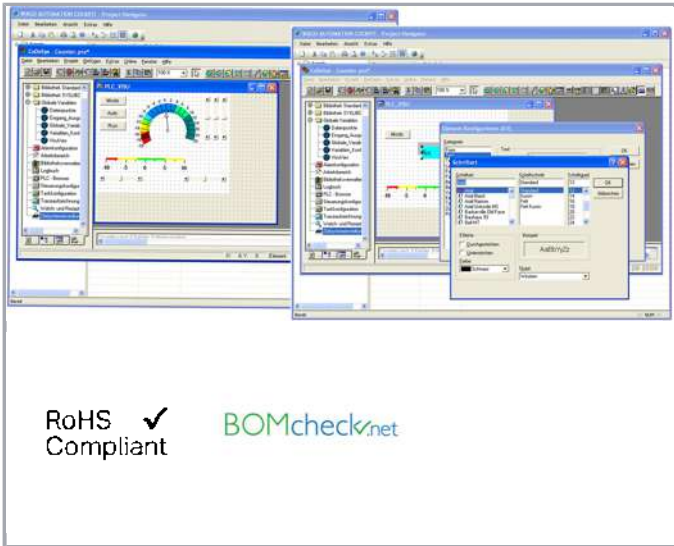




Data sheet | Item number: 759-916/000-920

WAGO AUTOMATION COCKPIT®; RS-232-Set

www.wago.com/759-916_000-920



Item description

WAGO's integrated development environment contains configuration, planning and programming tools for the following products: WAGO HMI Devices and WAGO I/O System 750 Couplers and Controllers.

WAGO AUTOMATION COCKPIT® is also the hub for all available WAGO tools, including ETHERNET-Settings, WAGO-I/O-CHECK, I/O-Update, etc.

Extensive project management permits network and device configuration.

The software ensures consistent data management within a project. All data points are input once and are then available within the project. The IEC61131 programming environment (CODESYS software) is integrated for device programming.

Version management of the installed CODESYS software versions can be maintained as another support feature of WAGO-AUTOMATION COCKPIT®.

WAGO AUTOMATION COCKPIT® includes the following programs:

- 759-911 WAGO-I/O-PRO CAA
- 759-920 WAGO-I/O-CHECK

Data

System requirements

Supported operating systems

Windows XP (SP3 or higher)
Windows 7

Subject to changes. Please also observe the further product documentation!

WAGO Kontakttechnik GmbH & Co. KG
Hansastr. 27
32423 Minden
Phone: +49571 887-0 | Fax: +49571 887-169
Email: info.de@wago.com | Web: www.wago.com

Do you have any questions about our products?
We are always happy to take your call at +49 (571) 887-44222.



Data sheet | Item number: 759-916/000-920

www.wago.com/759-916_000-920

| | |
|---------------------------|--|
| Processor | 1 GHz or higher, with 32 bits (x86) or 64 bits (x64) |
| RAM memory | 1 GB RAM (min.), 2 GB RAM or more (recommended) |
| Hard disk storage | min. 490 MByte |
| Graphics resolution | 1024 x 786 (min.), 1280 x 1024 or higher (recommended) |
| Other system requirements | CD-ROM and Mouse required |

Delivery

| | |
|----------|---|
| Included | CD-ROM with software and serial communication cable (750-920) |
|----------|---|

Commercial data

| | |
|-------------------|---------------|
| Packaging type | BOX |
| Country of origin | DE |
| GTIN | 4050821170044 |

Counterpart

Installation Notes

Subject to changes. Please also observe the further product documentation!

WAGO Kontakttechnik GmbH & Co. KG
Hansastr. 27
32423 Minden
Phone: +49571 887-0 | Fax: +49571 887-169
Email: info.de@wago.com | Web: www.wago.com

Do you have any questions about our products?
We are always happy to take your call at +49 (571) 887-44222.