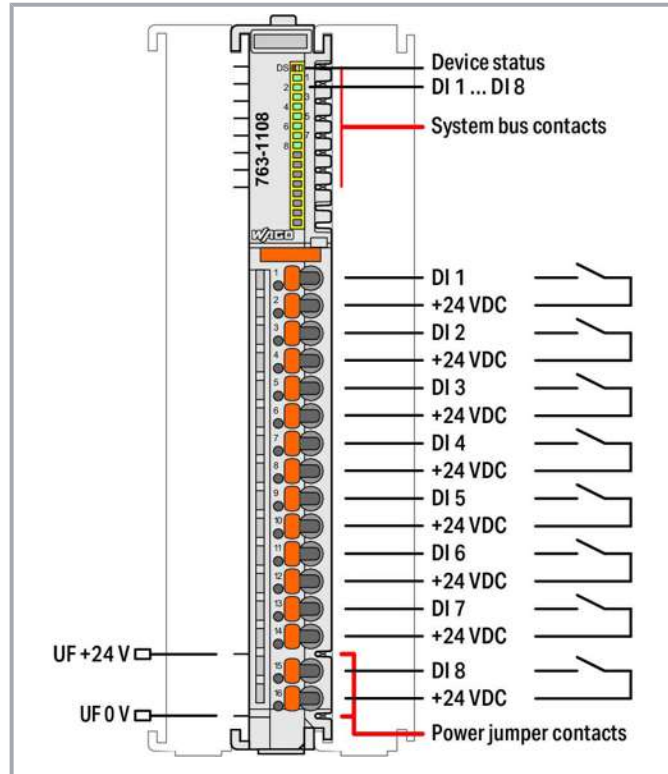


Data sheet | Item number: 763-1108

8-channel digital input; 24 VDC; High-Speed

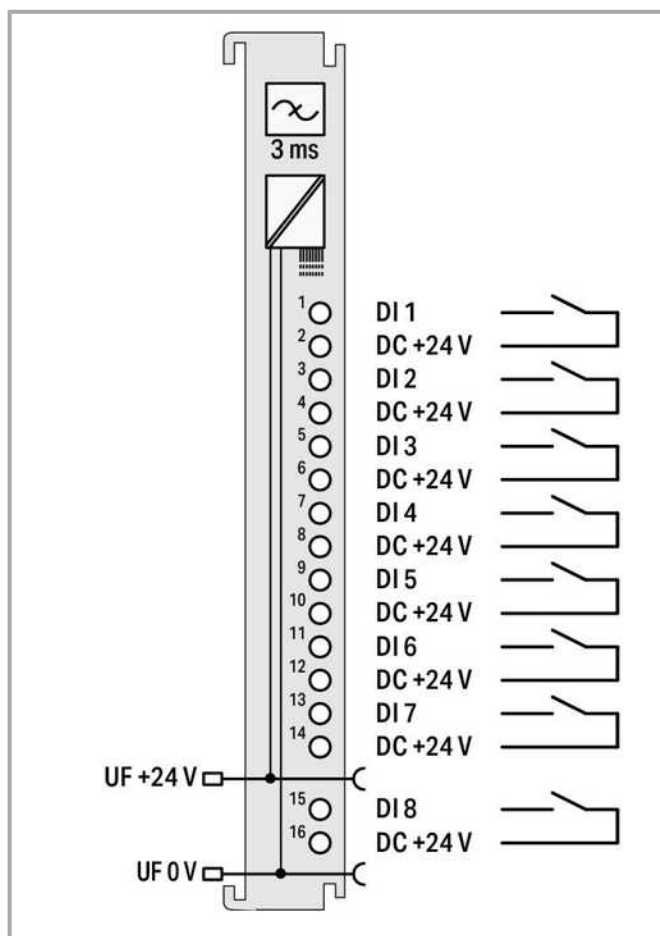
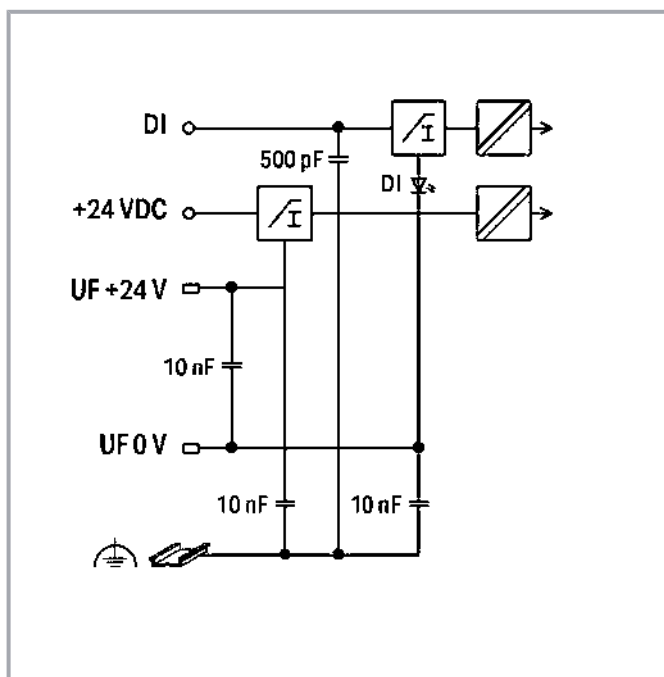
www.wago.com/763-1108



Subject to changes. Please also observe the further product documentation!

WAGO Corporation
Germantown, WI 53022
Phone: 1-800-DIN-RAIL (346-7245) | Fax: (262) 255-6222
Email: info.us@wago.com | Web: www.wago.us

Do you have any questions about our products?
We are always happy to take your call at +49 (571) 887-44222.



Item description

This three-part digital input module is a 2-wire device featuring eight channels in a width of just 12 mm (0.47 inch).

The module consists of a base module, an electronic module and a pluggable connector.

It receives binary control signals from digital field devices (e.g., sensors, encoders, switches or proximity sensors) with a short-circuit-proof sensor supply.

The module features Push-in CAGE CLAMP® connections, enabling solid conductors to be connected by simply pushing them in.

A green LED indicates the signal state of each channel.

Field and system levels are electrically isolated.

Data

Technical data

Device-specific	Synchronization mode: time-synchronized, freewheeling
Number of digital inputs	8
Number of Channels	8
Signal type	Voltage

Subject to changes. Please also observe the further product documentation!

WAGO Corporation
Germantown, WI 53022
Phone: 1-800-DIN-RAIL (346-7245) | Fax: (262) 255-6222
Email: info.us@wago.com | Web: www.wago.us

Do you have any questions about our products?
We are always happy to take your call at +49 (571) 887-44222.



Signal type (voltage)	24 VDC
Sensor connection	8 x (2-wire)
Input characteristic	High-side switching
Input characteristic	Type 3, per IEC 61131-2
Input filter	1 μ s
Input current at specific input voltage	2.4 mA at 24 V
Delay time T _{on} from 0 to 1	3 μ s
Delay time T _{off} from 1 to 0	6 μ s
Data width	8-bit channel status
Supply voltage (field)	24 VSELV DC (-25 ... +30 %); UF
Current consumption, field supply (module with no external load)	14 mA
Power loss P _I	0.9 W
Isolation, Field/System	min. 1000 VDC (1 min); per EN/UL 61010-2-201
Dielectric strength	Up to \pm 35 V, at the digital input
Number of incoming power jumper contacts	2
Number of outgoing power jumper contacts	2
Current carrying capacity (power jumper contacts)	12 A
Marking	CI I, Div. 2, Group A, B, C, D, T4

Connection data

Connection technology: inputs / outputs	16 x Push-in CAGE CLAMP®
Connection type 1	Inputs/outputs
Solid conductor	0.25 ... 1.5 mm ² / 22 ... 16 AWG
Fine-stranded conductor	0.25 ... 1.5 mm ² / 22 ... 16 AWG
Strip length	8 ... 9 mm / 0.31 ... 0.35 inch
Note (conductor cross-section)	Insulated ferrule: 0.75 mm ² (max.)

Physical data

Width	12 mm / 0.472 inch
Height	105 mm / 4.134 inch
Depth	75 mm / 2.953 inch

Mechanical data

Mounting type	DIN-35 rail
---------------	-------------

Subject to changes. Please also observe the further product documentation!

WAGO Corporation
 Germantown, WI 53022
 Phone: 1-800-DIN-RAIL (346-7245) | Fax: (262) 255-6222
 Email: info.us@wago.com | Web: www.wago.us

Do you have any questions about our products?
 We are always happy to take your call at +49 (571) 887-44222.

Material data

Fire load	0.062 MJ
Weight	70 g
Conformity marking	CE

Environmental requirements


Ambient temperature (operation)	-25 ... +60 °C (Horizontal, typical control cabinet installation; -25 ... +50 °C, other mounting positions)
Surrounding air temperature (storage)	-40 ... +85 °C
Temperature range of connection cable per EN 61010-2-201	$\geq (T_{\text{ambient}} + 25 \text{ K})$
Temperature range of connection cable per UL 61010-2-201 (min.)	85 °C
Protection type	IP20
Pollution degree (5)	2
Operating altitude	without temperature derating: 0 ... 2000 m; with temperature derating: 2000 ... 3000 m (0.5 K/100 m)
Mounting position	horizontal, typical for control cabinets (nominal mounting position); horizontal (floor mounting position); standing (vertical at bottom)
Relative humidity (without condensation)	95 %
EMC immunity to interference	per EN 61000-6-1, -2
EMC emission of interference	per EN 61000-6-3, -4

Commercial data

PU (SPU)	1 Stück
Country of origin VKOrg Germany	DE
GTIN	4055143975841
Customs tariff number VKOrg Germany	8538901000

Approvals / Certificates

Ex-Approvals

Logo	Approval	Additional Approval Text	Certificate name
	UL Underwriters Laboratories Inc. (HAZARDOUS LOCATIONS)	UL 121201	E198726

Ship Approvals

Subject to changes. Please also observe the further product documentation!


WAGO Corporation
Germantown, WI 53022
Phone: 1-800-DIN-RAIL (346-7245) | Fax: (262) 255-6222
Email: info.us@wago.com | Web: www.wago.us

Do you have any questions about our products?
We are always happy to take your call at +49 (571) 887-44222.



Logo	Approval	Additional Approval Text	Certificate name
	DNV DNV Germany GmbH	DNV-CG-0339, Aug. 2021	TAA000031M

UL-Approvals

Logo	Approval	Additional Approval Text	Certificate name
	UL Underwriters Laboratories Inc. (ORDINARY LOCATIONS)	UL 61010-2-201	E175199

Installation Notes**Product family**

WAGO I/O System Advanced
[Show all products from the family](#)

Subject to changes. Please also observe the further product documentation!

WAGO Corporation
Germantown, WI 53022
Phone: 1-800-DIN-RAIL (346-7245) | Fax: (262) 255-6222
Email: info.us@wago.com | Web: www.wago.us

Do you have any questions about our products?
We are always happy to take your call at +49 (571) 887-44222.