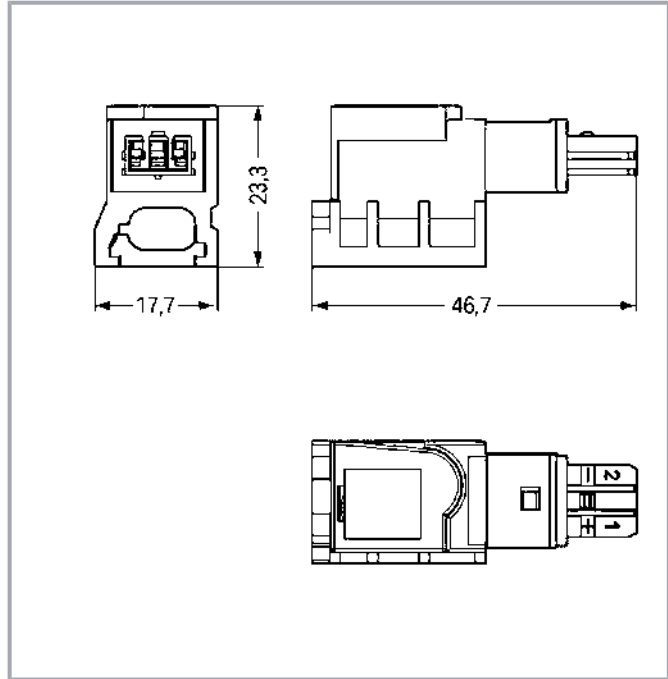


## Data sheet | Item number: 893-129

Tap-off module; for flat cable; 2-pole; with cable connection on the output side; light gray

[www.wago.com/893-129](http://www.wago.com/893-129)



### Item description

#### Tap-off module *WINSTA*® IDC F coding

The *WINSTA*® IDC tap-off module with protection against mismatching supports fast, reliable installation. The pluggable installation connectors with spring pressure connection technology function without screw connections. They allow flexible, error-free installation in a large number of applications. The mechanical coding and color coding of the pluggable installation connector ensure error-free installation of the individual components – including protection against mismatching. The pluggable installation connector is protected against ingress by solid objects in accordance with protection type IP20 (When mated: IP2xC (These compact connectors are not designed for use in open, easily accessible areas!)). The KNX protocol allows different equipment within one building system to communicate. The grey *WINSTA*® IDC pluggable installation connectors in F coding support applications in the low-voltage domain. This product meets all the mandatory fire protection requirements of fire class E; thus it can be used in domains where fire safety is relevant.

Subject to changes. Please also observe the further product documentation!

WAGO Corporation  
Germantown, WI 53022  
Phone: 1-800-DIN-RAIL (346-7245) | Fax: (262) 255-6222  
Email: [info.us@wago.com](mailto:info.us@wago.com) | Web: [www.wago.us](http://www.wago.us)

Do you have any questions about our products?  
We are always happy to take your call at +49 (571) 887-44222.



## Push-in CAGE CLAMP® spring pressure connection technology – pluggable installation instead of laborious screw connections!

WINSTA® is the pluggable connection system that is optimally tailored to the strict requirements of electrical installation. It ensures error-free installation of cables and components, quickly and reliably. Take advantage of the pluggable version of our maintenance-free spring pressure connection technology too! Plan your installation with WINSTA® IDC pluggable installation connectors with protection against mismatching from WAGO.

- pluggable installation connectors with protection against mismatching
- products perfectly tailored to your requirements guarantee safe use
- for high-power connections for supplying power
- ready for immediate use
- convenient installation and commissioning

### Data

#### Electrical data

Note on contact resistance

approx. 1 mΩ of contact resistance  
approx. 0.25 mΩ contact transition plug/socket

#### IEC Approvals

Ratings per	IEC/EN 60664-1
Rated voltage (III / 3)	50 V
Rated impulse voltage (III/3)	0.8 kV
Rated current	3 A
Legend (ratings)	(III / 3) △ Overvoltage category III / Pollution degree 3

#### Connection data

##### Connection 1

Connection technology	IDC connection
Actuation type	Operating tool
Number of poles	2

Subject to changes. Please also observe the further product documentation!

WAGO Corporation  
Germantown, WI 53022  
Phone: 1-800-DIN-RAIL (346-7245) | Fax: (262) 255-6222  
Email: [info.us@wago.com](mailto:info.us@wago.com) | Web: [www.wago.us](http://www.wago.us)

Do you have any questions about our products?  
We are always happy to take your call at +49 (571) 887-44222.



## Physical data

Width	17.7 mm / 0.697 inch
Height	23.3 mm / 0.917 inch
Depth	46.7 mm / 1.839 inch

## Mechanical data

technology	KNX
Application	KNX
Coding	F
Variable coding	No
Marking	1+ 2-
Potential Marking	1+ 2-
Mating force of a plug-in connection	approx. 10 ... 15 N
Retention force of a plug-in connection	When locked: > 80 N
Unmating force of a plug-in connection	Unlocked: approx. 15 ... 20 N
Number of mating cycles	200
Protection type	IP20; When mated: IP2xC (These compact connectors are not designed for use in open, easily accessible areas!)
Suitable	for flat cable 2 x 1.5 mm <sup>2</sup>

## Plug-in connection

Mismating protection	Yes
Note on mismating protection	All WINSTA® components are 100% protected against mismating when: a.) plugging different numbers of poles b.) plugging while rotated 180 c.) plugging while laterally staggered d.) plugging one pole
Locking of plug-in connection	locking lever

## Material data

Note (material data)	Information on material data can be found here
Color	light gray
Insulation material	Polyamide (PA66)
Fire class per EN 50575	E <sub>ca</sub>
Contact material	Copper or copper alloy; surface-treated

Subject to changes. Please also observe the further product documentation!

WAGO Corporation  
Germantown, WI 53022  
Phone: 1-800-DIN-RAIL (346-7245) | Fax: (262) 255-6222  
Email: [info.us@wago.com](mailto:info.us@wago.com) | Web: [www.wago.us](http://www.wago.us)

Do you have any questions about our products?  
We are always happy to take your call at +49 (571) 887-44222.



Weight	15.6 g
--------	--------

## Environmental requirements

Processing temperature	-5 ... +40 °C
Continuous operating temperature	-35 ... +85 °C
Note on continuous operating temperature	PVC cable for temperatures ≤ 70 °C (including halogen-free) PVC flat cable for temperatures -15 °C to ≤ 70 °C (including halogen-free) Insulating parts for temperatures ≤ 105 °C

## Commercial data

PU (SPU)	50 Stück
Packaging type	box
Country of origin VKOrg Germany	CH
GTIN	4050821471721
Customs tariff number VKOrg Germany	85366990990

## Other

technology	KNX
------------	-----

## Counterpart





Item no.893-1032

Plug; with strain relief housing; 2-pole; light gray

[www.wago.com/893-1032](http://www.wago.com/893-1032)

## Optional accessories

### Cables and pluggable connectors

Flat cable		
	<b>Item no.: 897-121</b> Flat cable; Eca; 2 x 1.5 mm²; PVC; 2 buses; 50 V; 1,50 mm²; light gray	<a href="http://www.wago.com/897-121">www.wago.com/897-121</a>
	<b>Item no.: 897-122</b> Flat cable; Dca; 2 x 1.5 mm²; halogen-free; 2 buses; 50 V; 1,50 mm²; light gray	<a href="http://www.wago.com/897-122">www.wago.com/897-122</a>

Subject to changes. Please also observe the further product documentation!

WAGO Corporation  
 Germantown, WI 53022  
 Phone: 1-800-DIN-RAIL (346-7245) | Fax: (262) 255-6222  
 Email: [info.us@wago.com](mailto:info.us@wago.com) | Web: [www.wago.us](http://www.wago.us)

Do you have any questions about our products?  
 We are always happy to take your call at +49 (571) 887-44222.



## Downloads Documentation

### Bid Text

893-129 X81 - Datei	2019 Feb 19	xml 3.0 kB	Download
------------------------	-------------	---------------	----------

893-129 doc - Datei	2015 Jan 9	doc 24.1 kB	Download
------------------------	------------	----------------	----------

## CAD files

### CAE data

WSCAD Universe 893-129	URL	Download
------------------------	-----	----------

EPLAN Data Portal 893-129	URL	Download
---------------------------	-----	----------

## Environmental Product Compliance

### Compliance Search

Environmental Product Compliance 893-129 Tap-off module; for flat cable; 2-pole; with cable connection on the output side; light gray	URL	Download
--	-----	----------

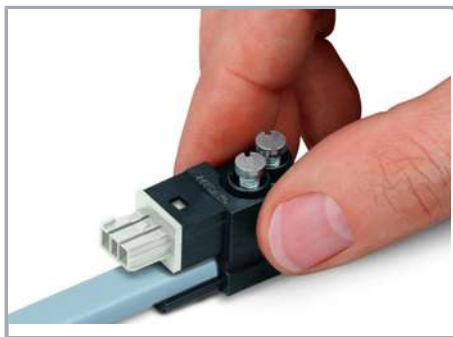
## Installation Notes

### Conductor termination

Subject to changes. Please also observe the further product documentation!

WAGO Corporation  
Germantown, WI 53022  
Phone: 1-800-DIN-RAIL (346-7245) | Fax: (262) 255-6222  
Email: [info.us@wago.com](mailto:info.us@wago.com) | Web: [www.wago.us](http://www.wago.us)

Do you have any questions about our products?  
We are always happy to take your call at +49 (571) 887-44222.



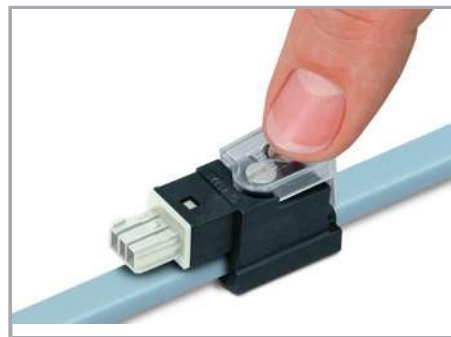
The IDC module can only be mounted if the two codings match each other.

Should the IDC module jam during mounting, turn the module by 180° and remount it, flush with the base.

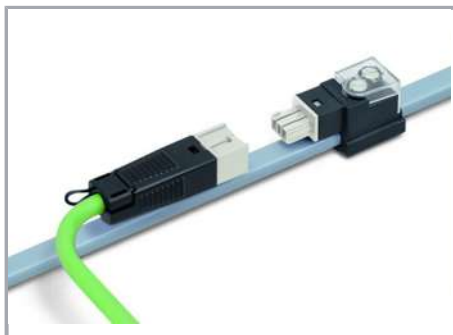


Tighten the screws to connect the flat cable.

Observe 1 Nm of tightening torque!



Snap the transparent protective cover onto the module.



Connect the cable assembly to the module.

## Product family

### WINSTA® IDC

[Show all products from the family](#)

Subject to changes. Please also observe the further product documentation!

WAGO Corporation  
Germantown, WI 53022  
Phone: 1-800-DIN-RAIL (346-7245) | Fax: (262) 255-6222  
Email: [info.us@wago.com](mailto:info.us@wago.com) | Web: [www.wago.us](http://www.wago.us)

Do you have any questions about our products?  
We are always happy to take your call at +49 (571) 887-44222.