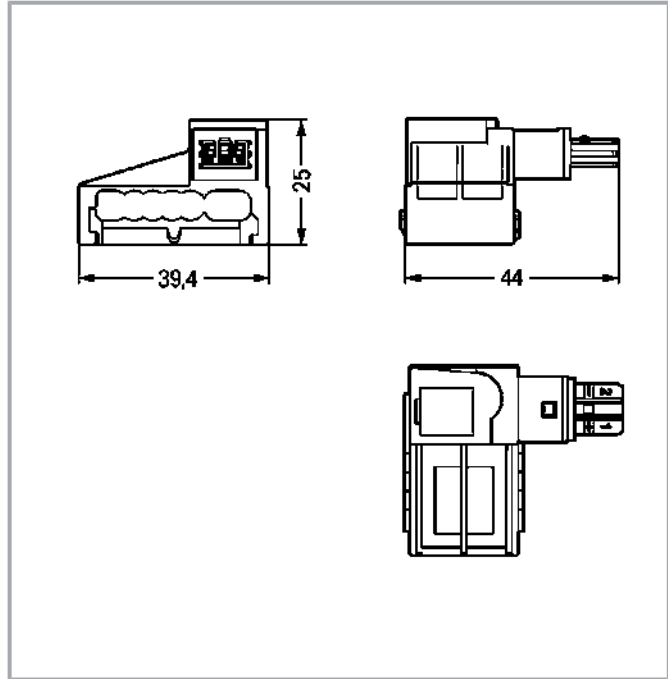


## Data sheet | Item number: 893-262

Tap-off module; for flat cable; 5 x 2.5 mm<sup>2</sup> + 2 x 1.5 mm<sup>2</sup>; 2-pole; Cod. E;  
green

[www.wago.com/893-262](http://www.wago.com/893-262)



### Item description

#### Tap-off module *WINSTA*® IDC rated current 3 A

The *WINSTA*® IDC tap-off module with protection type IP20 is the pluggable solution for your application in control cabinets, on PCBs or for lighting connections. Whether on PCBs, in control cabinets or for connecting lights – pluggable installation connectors from WAGO allow you to make connections according to an enormous variety of requirements in no time flat. The coding options reduce installation errors, allowing fast, maintenance-free wiring of all components. The pluggable installation connector is protected against ingress by solid objects in accordance with protection type IP20 (When mated: IP2xC (These compact connectors are not designed for use in open, easily accessible areas!)). The KNX standard is the ultimate benchmark in building automation. It ensures error-free, manufacturer-independent networking of advanced building systems. The standardised *WINSTA*® IDC pluggable installation connectors in green are used for transfer of signals in KNX networks. This product meets all the mandatory fire protection requirements of fire class E; therefore it can be used in domains where fire safety is relevant.

Subject to changes. Please also observe the further product documentation!

WAGO Corporation  
Germantown, WI 53022  
Phone: 1-800-DIN-RAIL (346-7245) | Fax: (262) 255-6222  
Email: [info.us@wago.com](mailto:info.us@wago.com) | Web: [www.wago.us](http://www.wago.us)

Do you have any questions about our products?  
We are always happy to take your call at +49 (571) 887-44222.



## Push-in CAGE CLAMP® spring pressure connection technology – pluggable installation instead of laborious screw connections!

WINSTA® is the pluggable connection system that is ideally tailored to the strict requirements of electrical installation. It ensures error-free installation of cables and components, quickly and reliably. Enjoy the benefits of the pluggable version of our maintenance-free spring pressure connection technology too! Plan your installation with *WINSTA*® IDC pluggable installation connectors with protection against mismatching from WAGO.

- effective protection against mismatching
- products perfectly tailored to your requirements guarantee safe use
- for emergency power supply
- ready to install and use immediately
- convenient installation and commissioning

### Data

#### Electrical data

Note on contact resistance	approx. 1 mΩ of contact resistance approx. 0.25 mΩ contact transition plug/socket
----------------------------	--

#### IEC Approvals

Ratings per	IEC/EN 60664-1
Rated voltage (III / 3)	50 V
Rated impulse voltage (III/3)	0.8 kV
Rated current	3 A
Legend (ratings)	(III / 3) ≙ Overvoltage category III / Pollution degree 3

#### Connection data

##### Connection 1

Connection technology	IDC connection
Actuation type	Operating tool
Number of poles	2

#### Physical data

Width	39.4 mm / 1.551 inch
-------	----------------------

Subject to changes. Please also observe the further product documentation!

WAGO Corporation  
Germantown, WI 53022  
Phone: 1-800-DIN-RAIL (346-7245) | Fax: (262) 255-6222  
Email: [info.us@wago.com](mailto:info.us@wago.com) | Web: [www.wago.us](http://www.wago.us)

Do you have any questions about our products?  
We are always happy to take your call at +49 (571) 887-44222.



Height	25 mm / 0.984 inch
Depth	44 mm / 1.732 inch

## Mechanical data

technology	KNX
Application	KNX
Coding	E
Variable coding	No
Marking	1+ 2-
Potential Marking	1+ 2-
Mating force of a plug-in connection	approx. 10 ... 15 N
Retention force of a plug-in connection	When locked: > 80 N
Unmating force of a plug-in connection	Unlocked: approx. 15 ... 20 N
Number of mating cycles	200
Protection type	IP20; When mated: IP2xC (These compact connectors are not designed for use in open, easily accessible areas!)
Suitable	for flat cable 5 x 2.5 mm <sup>2</sup> + 2 x 1.5 mm <sup>2</sup>

## Plug-in connection

Mismating protection	Yes
Note on mismating protection	All WINSTA® components are 100% protected against mismating when: a.) plugging different numbers of poles b.) plugging while rotated 180 c.) plugging while laterally staggered d.) plugging one pole
Locking of plug-in connection	locking lever

## Material data

Note (material data)	Information on material data can be found here
Color	green
Insulation material	Polyamide (PA66)
Fire class per EN 50575	E <sub>ca</sub>
Contact material	Copper or copper alloy; surface-treated
Weight	19.6 g

Subject to changes. Please also observe the further product documentation!

WAGO Corporation  
Germantown, WI 53022  
Phone: 1-800-DIN-RAIL (346-7245) | Fax: (262) 255-6222  
Email: [info.us@wago.com](mailto:info.us@wago.com) | Web: [www.wago.us](http://www.wago.us)

Do you have any questions about our products?  
We are always happy to take your call at +49 (571) 887-44222.

## Environmental requirements

Processing temperature	-5 ... +40 °C
Continuous operating temperature	-35 ... +85 °C
Note on continuous operating temperature	PVC cable for temperatures ≤ 70 °C (including halogen-free) PVC flat cable for temperatures -15 °C to ≤ 70 °C (including halogen-free) Insulating parts for temperatures ≤ 105 °C

## Commercial data

Product Group	20 (WINSTA)
PU (SPU)	50 Stück
Packaging type	box
Country of origin VKOrg Germany	CH
GTIN	4045454267292
Customs tariff number VKOrg Germany	8536698000

## Other

technology	KNX
------------	-----

## Counterpart



**Item no. 893-1012**  
Plug; with strain relief housing; 2-pole; green

[www.wago.com/893-1012](http://www.wago.com/893-1012)



**Item no. 894-8992/033-106**  
pre-assembled interconnecting cable; Eca; Socket/plug; 2-pole; Cod. E; J-Y(ST)Y...LG 2x2x0.8; 1 m; green

[www.wago.com/894-8992/033-106](http://www.wago.com/894-8992/033-106)

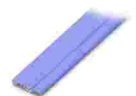


**Item no. 894-8992/233-106**  
pre-assembled connecting cable; Eca; Plug/open-ended; 2-pole; Cod. E; J-Y(ST)Y...LG 2x2x0.8; 1 m; green

[www.wago.com/894-8992/233-106](http://www.wago.com/894-8992/233-106)

## Optional accessories

### Cables and pluggable connectors

Flat cable	
	<b>Item no.: 897-262</b> Flat cable; Cca; 5G 2.5 mm² + 2 x 1.5 mm²; halogen-free; 3L + N + PE + 2 buses; 0.6/1 kV; 2,50 mm²; violet

[www.wago.com/897-262](http://www.wago.com/897-262)

Subject to changes. Please also observe the further product documentation!

WAGO Corporation  
Germantown, WI 53022  
Phone: 1-800-DIN-RAIL (346-7245) | Fax: (262) 255-6222  
Email: [info.us@wago.com](mailto:info.us@wago.com) | Web: [www.wago.us](http://www.wago.us)

Do you have any questions about our products?  
We are always happy to take your call at +49 (571) 887-44222.



Item no.: 897-261

Flat cable; Eca; 5G 2.5 mm<sup>2</sup> + 2 x 1.5 mm<sup>2</sup>; PVC; 3L + N + PE + 2 buses; 0.6/1 kV; 2,50 mm<sup>2</sup>; violet

## Downloads

### Documentation

#### Bid Text

893-262 X81 - Datei	2019 Feb 19	xml 3.1 kB	Download
893-262 doc - Datei	2015 Jan 9	doc 23.6 kB	Download

## CAD files

### CAE data

EPLAN Data Portal 893-262	URL	Download
WSCAD Universe 893-262	URL	Download

## Environmental Product Compliance

### Compliance Search

Environmental Product Compliance 893-262 Tap-off module; for flat cable; 5 x 2.5 mm <sup>2</sup> + 2 x 1.5 mm <sup>2</sup> ; 2-pole; Cod. E; green	URL	Download
---	-----	----------

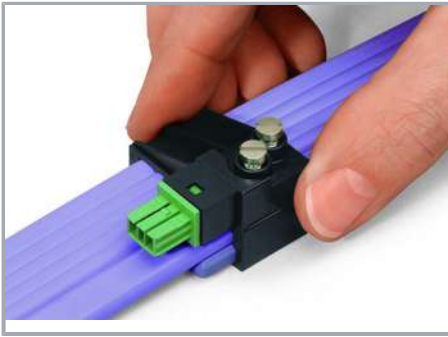
## Installation Notes

### Conductor termination

Subject to changes. Please also observe the further product documentation!

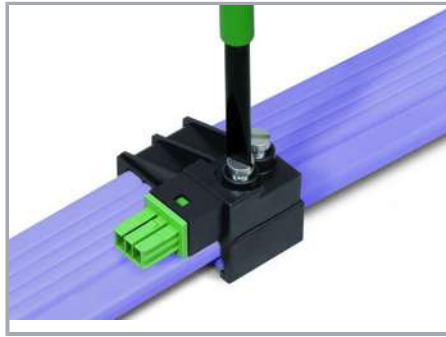
WAGO Corporation  
Germantown, WI 53022  
Phone: 1-800-DIN-RAIL (346-7245) | Fax: (262) 255-6222  
Email: [info.us@wago.com](mailto:info.us@wago.com) | Web: [www.wago.us](http://www.wago.us)

Do you have any questions about our products?  
We are always happy to take your call at +49 (571) 887-44222.



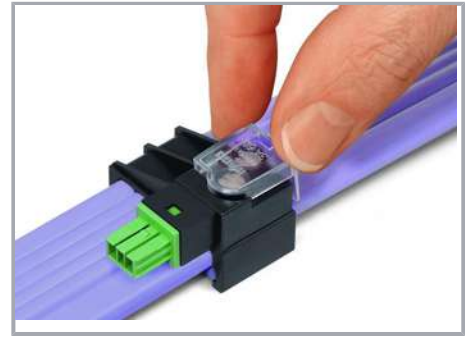
The IDC module can only be mounted if the two codings match each other.

Should the IDC module jam during mounting, turn the module by 180° and remount it, flush with the base.

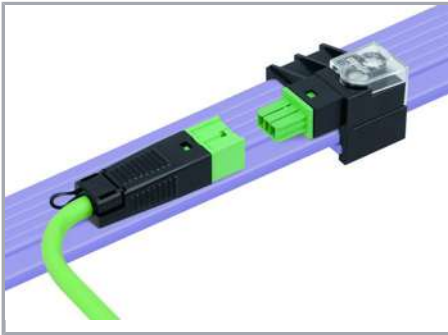


Tighten the screws to connect the flat cable.

Observe 1 Nm of tightening torque!



Snap the transparent protective cover onto the module.



Connect the cable assembly to the module.

## Product family

### WINSTA® IDC

[Show all products from the family](#)

Subject to changes. Please also observe the further product documentation!

WAGO Corporation  
Germantown, WI 53022  
Phone: 1-800-DIN-RAIL (346-7245) | Fax: (262) 255-6222  
Email: [info.us@wago.com](mailto:info.us@wago.com) | Web: [www.wago.us](http://www.wago.us)

Do you have any questions about our products?  
We are always happy to take your call at +49 (571) 887-44222.