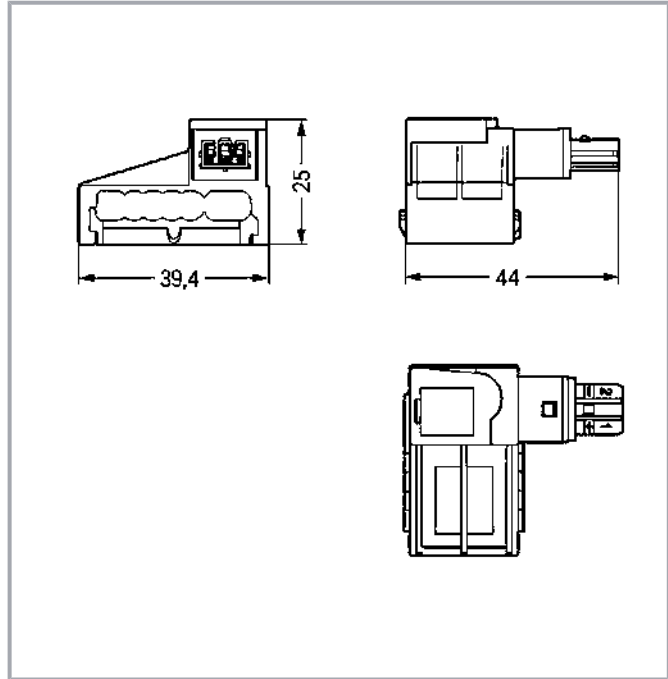


Data sheet | Item number: 893-269

Tap-off module; for flat cable; 5 x 2.5 mm² + 2 x 1.5 mm²; 2-pole; Cod. F; light gray

www.wago.com/893-269



Item description

Tap-off module *WINSTA*® IDC rated current 3 A

The *WINSTA*® IDC tap-off module with protection type IP20 supports rapid, correct installation. WAGO pluggable installation connectors can be used when requirements repeat or are distributed on a specified pattern, for example for installing grid lighting or flush-mount lighting. The coding options reduce installation errors, allowing fast, maintenance-free wiring of all components. The pluggable installation connector offers protection against contact with live components in accordance with protection type IP20 (When mated: IP2xC (These compact connectors are not designed for use in open, easily accessible areas!)). The harmonised KNX interface represents a manufacturer-independent communication protocol for intelligently networking state-of-the-art home and building system technologies. *WINSTA*® IDC pluggable installation connectors with F coding are used in low-voltage applications. This product meets all the mandatory fire protection requirements of fire class E; therefore it can be used in areas where fire safety is relevant.

Subject to changes. Please also observe the further product documentation!

WAGO Corporation
Germantown, WI 53022
Phone: 1-800-DIN-RAIL (346-7245) | Fax: (262) 255-6222
Email: info.us@wago.com | Web: www.wago.us

Do you have any questions about our products?
We are always happy to take your call at +49 (571) 887-44222.



Lower costs through fast commissioning and elimination of service expenses – solutions from WINSTA® IDC

WINSTA® is the pluggable connection system that is optimally tailored to the strict requirements of electrical installation. It offers fast, secure and, above all, error-free installation of components and cables. Now you can also reduce installation costs without compromising quality and safety: The WINSTA® IDC pluggable installation connector with protection type IP20 reduces the need for servicing and prevents unnecessary downtime.

- pluggable installation connectors with protection against mismating
- products perfectly tailored to your requirements guarantee safe use
- with F coding for connections with protection against mismating for supplying power
- custom-engineered solutions
- convenient installation and commissioning

Data

Electrical data

Note on contact resistance	approx. 1 mΩ of contact resistance approx. 0.25 mΩ contact transition plug/socket
----------------------------	--

IEC Approvals

Ratings per	IEC/EN 60664-1
Rated voltage (III / 3)	50 V
Rated impulse voltage (III/3)	0.8 kV
Rated current	3 A
Legend (ratings)	(III / 3) ≙ Overvoltage category III / Pollution degree 3

Connection data

Connection 1

Connection technology	IDC connection
Actuation type	Operating tool
Number of poles	2

Physical data

Width	39.4 mm / 1.551 inch
Height	25 mm / 0.984 inch
Depth	44 mm / 1.732 inch

Subject to changes. Please also observe the further product documentation!

WAGO Corporation
 Germantown, WI 53022
 Phone: 1-800-DIN-RAIL (346-7245) | Fax: (262) 255-6222
 Email: info.us@wago.com | Web: www.wago.us

Do you have any questions about our products?
 We are always happy to take your call at +49 (571) 887-44222.



Mechanical data

technology	KNX
Application	KNX
Coding	F
Variable coding	No
Marking	1+ 2-
Potential Marking	1+ 2-
Mating force of a plug-in connection	approx. 10 ... 15 N
Retention force of a plug-in connection	When locked: > 80 N
Unmating force of a plug-in connection	Unlocked: approx. 15 ... 20 N
Number of mating cycles	200
Protection type	IP20; When mated: IP2xC (These compact connectors are not designed for use in open, easily accessible areas!)
Suitable	for flat cable 5 x 2.5 mm ² + 2 x 1.5 mm ²

Plug-in connection

Mismating protection	Yes
Note on mismating protection	All WINSTA® components are 100% protected against mismating when: a.) plugging different numbers of poles b.) plugging while rotated 180 c.) plugging while laterally staggered d.) plugging one pole
Locking of plug-in connection	locking lever

Material data

Note (material data)	Information on material data can be found here
Color	light gray
Insulation material	Polyamide (PA66)
Fire class per EN 50575	E _{ca}
Contact material	Copper or copper alloy; surface-treated
Weight	19 g

Environmental requirements

Processing temperature	-5 ... +40 °C
Continuous operating temperature	-35 ... +85 °C
Note on continuous operating temperature	PVC cable for temperatures ≤ 70 °C (including halogen-free)

Subject to changes. Please also observe the further product documentation!

WAGO Corporation
Germantown, WI 53022
Phone: 1-800-DIN-RAIL (346-7245) | Fax: (262) 255-6222
Email: info.us@wago.com | Web: www.wago.us

Do you have any questions about our products?
We are always happy to take your call at +49 (571) 887-44222.



PVC flat cable for temperatures -15 °C to $\leq 70\text{ °C}$ (including halogen-free)

Insulating parts for temperatures $\leq 105\text{ °C}$

Commercial data

Product Group	20 (WINSTA)
PU (SPU)	50 Stück
Packaging type	box
Country of origin VKOrg Germany	CH
GTIN	4045454267308
Customs tariff number VKOrg Germany	8536698000

Other

technology	KNX
------------	-----

Counterpart



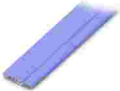

Item no.893-1032

Plug; with strain relief housing; 2-pole; light gray

www.wago.com/893-1032

Optional accessories

Cables and pluggable connectors

Flat cable	
	<p>Item no.: 897-262</p> <p>Flat cable; Cca; 5G 2.5 mm² + 2 x 1.5 mm²; halogen-free; 3L + N + PE + 2 buses; 0.6/1 kV; 2,50 mm²; violet</p> <p>www.wago.com/897-262</p>
	<p>Item no.: 897-261</p> <p>Flat cable; Eca; 5G 2.5 mm² + 2 x 1.5 mm²; PVC; 3L + N + PE + 2 buses; 0.6/1 kV; 2,50 mm²; violet</p> <p>www.wago.com/897-261</p>

Downloads

Documentation

Bid Text

893-269	2019 Feb 19	xml	Download
X81 - Datei		3.1 kB	
893-269	2015 Jan 9	doc	Download
doc - Datei		23.6 kB	

Subject to changes. Please also observe the further product documentation!

WAGO Corporation
 Germantown, WI 53022
 Phone: 1-800-DIN-RAIL (346-7245) | Fax: (262) 255-6222
 Email: info.us@wago.com | Web: www.wago.us

Do you have any questions about our products?
 We are always happy to take your call at +49 (571) 887-44222.

CAD files

CAE data

EPLAN Data Portal 893-269	URL	Download
WSCAD Universe 893-269	URL	Download

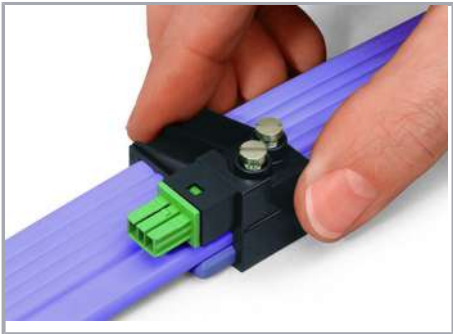
Environmental Product Compliance

Compliance Search

Environmental Product Compliance 893-269	URL	Download
Tap-off module; for flat cable; 5 x 2.5 mm² + 2 x 1.5 mm²; 2-pole; Cod. F; light gray		

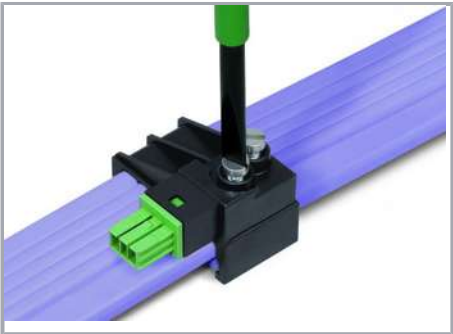
Installation Notes

Conductor termination



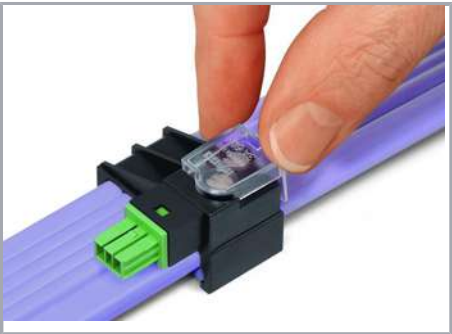
The IDC module can only be mounted if the two codings match each other.

Should the IDC module jam during mounting, turn the module by 180° and remount it, flush with the base.



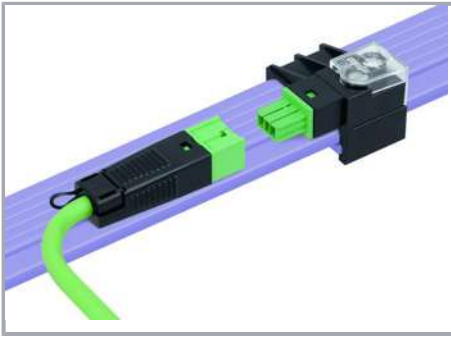
Tighten the screws to connect the flat cable.

Observe 1 Nm of tightening torque!



Snap the transparent protective cover onto the module.

Subject to changes. Please also observe the further product documentation!



Connect the cable assembly to the module.

Product family

WINSTA® IDC

[Show all products from the family](#)

Subject to changes. Please also observe the further product documentation!

WAGO Corporation
Germantown, WI 53022
Phone: 1-800-DIN-RAIL (346-7245) | Fax: (262) 255-6222
Email: info.us@wago.com | Web: www.wago.us

Do you have any questions about our products?
We are always happy to take your call at +49 (571) 887-44222.