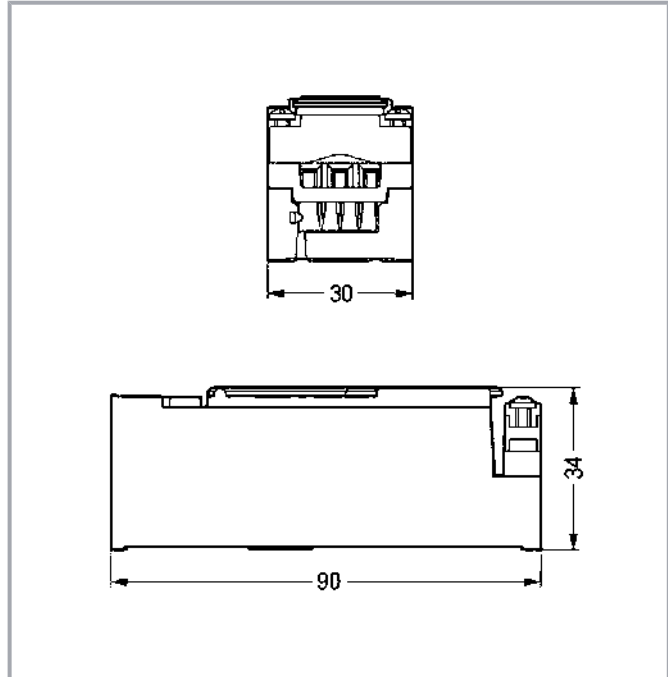
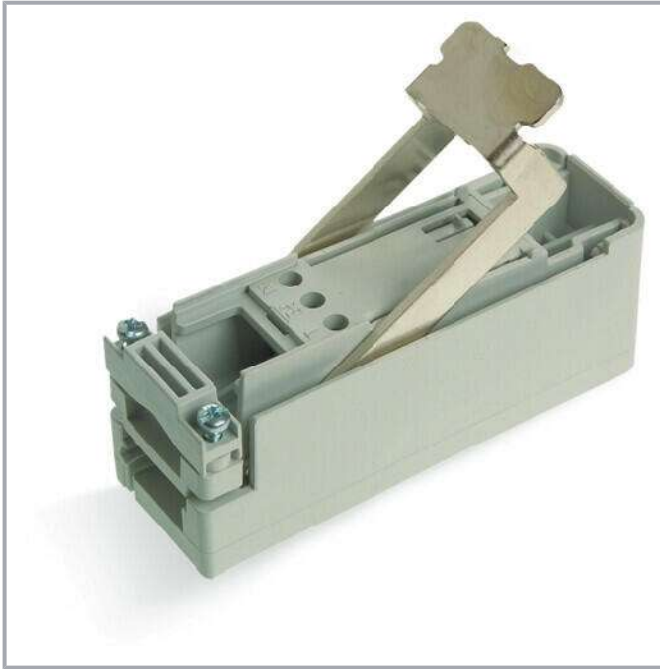


Data sheet | Item number: 896-232

Tap-off module; for flat cable; 3 x 2.5 mm²; 3-pole; gray

www.wago.com/896-232



Item description

Tap-off module *WINSTA*® IDC 3-pole

The *WINSTA*® IDC tap-off module 3-pole supports rapid, correct installation. On PCBs, in control cabinets or for connecting lights – pluggable installation connectors from WAGO allow you to make connections according to various requirements in next to no time. The mechanical coding and color coding of the pluggable installation connector ensure error-free installation of the individual components – including protection against mismating. The pluggable installation connector offers protection against contact with live components in accordance with protection type IP20 (When mated: IP2xC (These compact connectors are not designed for use in open, easily accessible areas!)). The rated current and voltage are important criteria for selecting a pluggable installation connector: They provide information about possible domains of use and applications. This product has a current rating of 24 A – so it is also suitable for high power loads.

Lower costs through fast commissioning and elimination of service expenses – solutions from *WINSTA*® IDC

The *WINSTA*® Pluggable Connection System allows pluggable electrical installation. This significantly reduces the need for servicing and lowers

Subject to changes. Please also observe the further product documentation!

WAGO Corporation
Germantown, WI 53022
Phone: 1-800-DIN-RAIL (346-7245) | Fax: (262) 255-6222
Email: info.us@wago.com | Web: www.wago.us

Do you have any questions about our products?
We are always happy to take your call at +49 (571) 887-44222.



costs. Choose durability and quality – the *WINSTA*® IDC pluggable installation connector with protection type IP20 from WAGO makes the electrical installation of electrical components noticeably easier.

- effective protection against mismatching
- products perfectly tailored to your requirements guarantee safe use
- custom-engineered solutions
- fast, secure installation

Data

Electrical data

Note on contact resistance	approx. 1 mΩ of contact resistance approx. 0.25 mΩ contact transition plug/socket
----------------------------	--

IEC Approvals

Ratings per	IEC/EN 60664-1
Rated voltage (III / 3)	250 V
Rated impulse voltage (III/3)	4 kV
Rated current	24 A
Legend (ratings)	(III / 3) ≙ Overvoltage category III / Pollution degree 3

Connection data

Total number of connection points	3
Total number of potentials	3

Connection 1

Connection technology	Screw connection
Actuation type	Operating tool
Number of poles	3
Wire cross-section	2.5 mm²

Connection 2

Connection technology 2	IDC connection
-------------------------	----------------

Physical data

Width	30 mm / 1.181 inch
-------	--------------------

Subject to changes. Please also observe the further product documentation!

WAGO Corporation
Germantown, WI 53022
Phone: 1-800-DIN-RAIL (346-7245) | Fax: (262) 255-6222
Email: info.us@wago.com | Web: www.wago.us

Do you have any questions about our products?
We are always happy to take your call at +49 (571) 887-44222.



Height	34 mm / 1.339 inch
Depth	90 mm / 3.543 inch

Mechanical data

Variable coding	No
Retention force of a plug-in connection	When locked: > 80 N
Protection type	IP20; When mated: IP2xC (These compact connectors are not designed for use in open, easily accessible areas!)
Suitable	for flat cable 3 x 2.5 mm ²

Plug-in connection

Mismating protection	Yes
Note on mismating protection	All WINSTA® components are 100% protected against mismating when: a.) plugging different numbers of poles b.) plugging while rotated 180 c.) plugging while laterally staggered d.) plugging one pole
Locking of plug-in connection	locking lever

Material data

Note (material data)	Information on material data can be found here
Color	gray
Insulation material	Polyamide (PA66)
Contact material	Copper or copper alloy; surface-treated
Fire load	1.5 MJ
Weight	70 g

Environmental requirements

Processing temperature	-5 ... +40 °C
Continuous operating temperature	-35 ... +85 °C
Note on continuous operating temperature	PVC cable for temperatures ≤ 70 °C (including halogen-free) PVC flat cable for temperatures -15 °C to ≤ 70 °C (including halogen-free) Insulating parts for temperatures ≤ 105 °C

Commercial data

Product Group	20 (WINSTA)
---------------	-------------

Subject to changes. Please also observe the further product documentation!

WAGO Corporation
Germantown, WI 53022
Phone: 1-800-DIN-RAIL (346-7245) | Fax: (262) 255-6222
Email: info.us@wago.com | Web: www.wago.us



Do you have any questions about our products?
We are always happy to take your call at +49 (571) 887-44222.



PU (SPU)	10 Stück
Packaging type	box
Country of origin VKOrg Germany	CH
GTIN	4045454004217
Customs tariff number VKOrg Germany	8536698000

Optional accessories

Cables and pluggable connectors

Flat cable		
	Item no.: 897-232 Flat cable; B2ca; 3G 2.5 mm ² ; halogen-free; L + PE + N; 0.6/1 kV; 2,50 mm ² ; light gray	www.wago.com/897-232
	Item no.: 897-231 Flat cable; Eca; 3G 2.5 mm ² ; PVC; L + PE + N; 0.6/1 kV; 2,50 mm ² ; light gray	www.wago.com/897-231

Downloads

Documentation

Bid Text

896-232	2019 Feb 19	xml	Download
X81 - Datei		3.0 kB	
896-232	2015 Jan 9	doc	Download
doc - Datei		23.0 kB	

CAD files

CAE data

EPLAN Data Portal 896-232	URL	Download
WSCAD Universe 896-232	URL	Download

Environmental Product Compliance

Compliance Search

Environmental Product Compliance 896-232	URL	Download
Tap-off module; for flat cable; 3 x 2.5 mm ² ; 3-pole; gray		

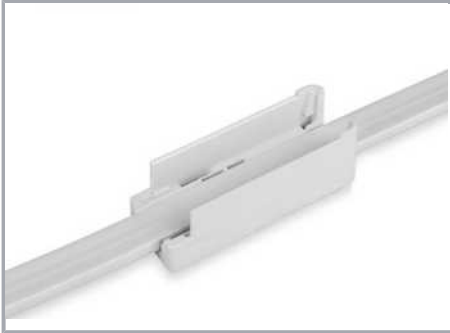
Subject to changes. Please also observe the further product documentation!

WAGO Corporation
 Germantown, WI 53022
 Phone: 1-800-DIN-RAIL (346-7245) | Fax: (262) 255-6222
 Email: info.us@wago.com | Web: www.wago.us

Do you have any questions about our products?
 We are always happy to take your call at +49 (571) 887-44222.

Installation Notes

Conductor termination



Position the base and tighten screw, if necessary. Insert flat cable accurately. The key in the base must match the groove in the cable insulation.



Cut outgoing feeder cable, completely strip and insert conductors. Tighten screws firmly (observe 0.7 Nm of tightening torque).



Insert upper part into base until it hits the stop (which will click when engaged). Push down and lock lever. All three cores are contacted simultaneously.

Product family

WINSTA® IDC

[Show all products from the family](#)

Subject to changes. Please also observe the further product documentation!

WAGO Corporation
Germantown, WI 53022
Phone: 1-800-DIN-RAIL (346-7245) | Fax: (262) 255-6222
Email: info.us@wago.com | Web: www.wago.us

Do you have any questions about our products?
We are always happy to take your call at +49 (571) 887-44222.